

Comune di Medolla
Comune di Medolla
E
COPIA CONFORME ALL'ORIGINALE DIGITALE
Protocollo N.0001042/2024 del 26/01/2024
Firmatario: Paolo Piccinini

Emotec Medolla

Ampliamento stabilimento

02. Relazione urbanistica/ Tavole

Ottobre 2023

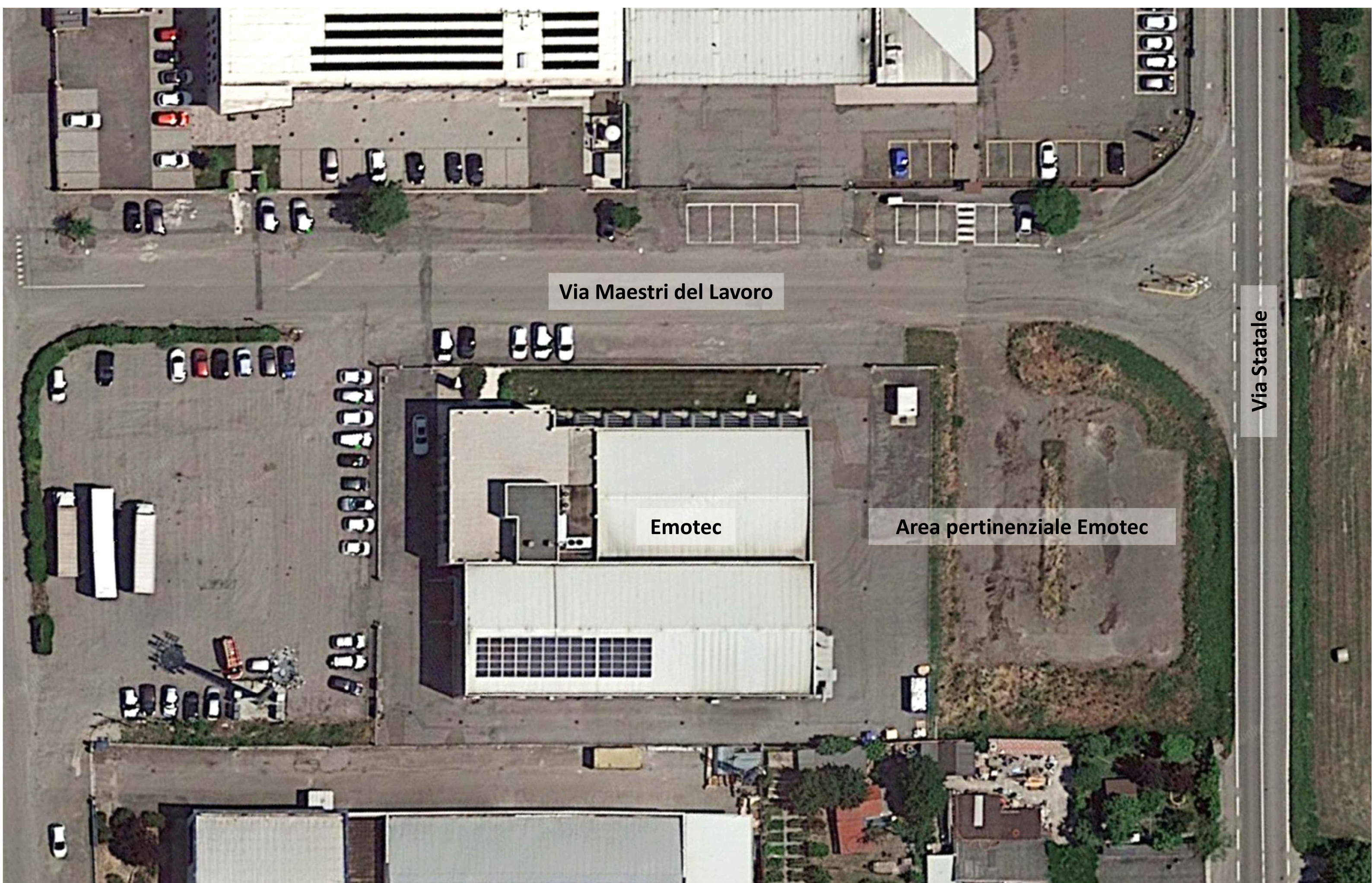
Integrazione Gennaio 2024



Emotec

Via Statale

Medolla

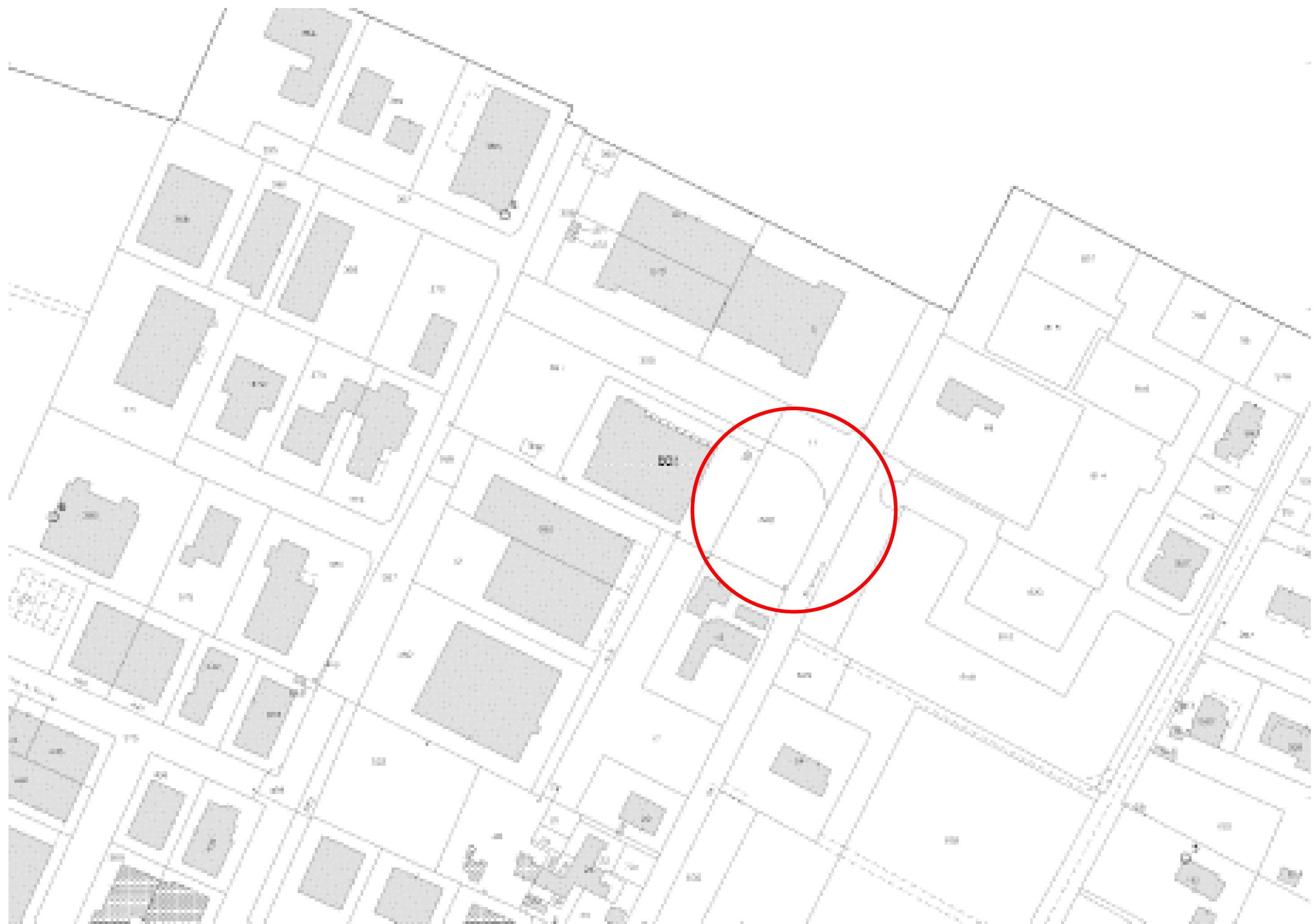


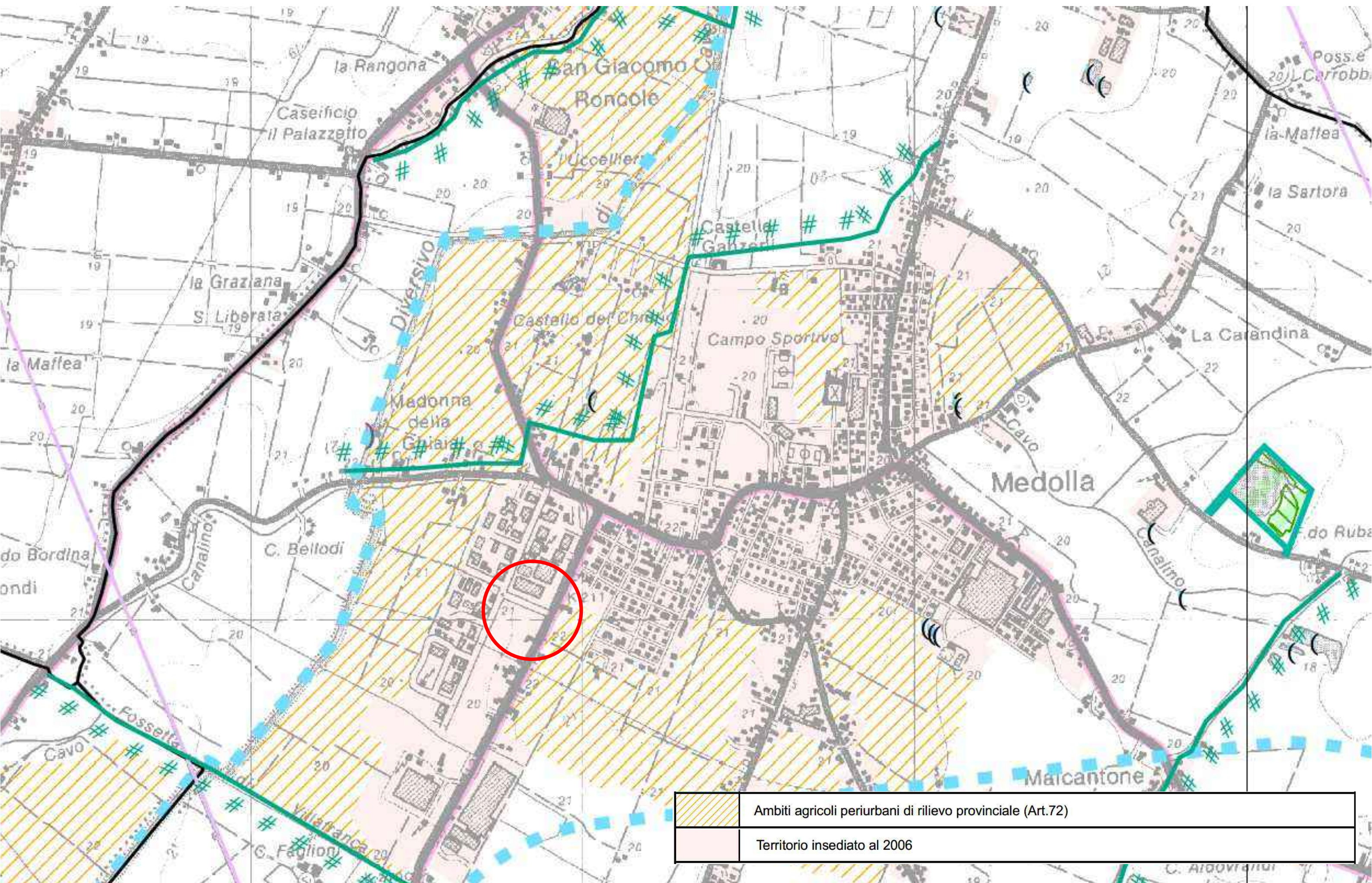
Via Maestri del Lavoro

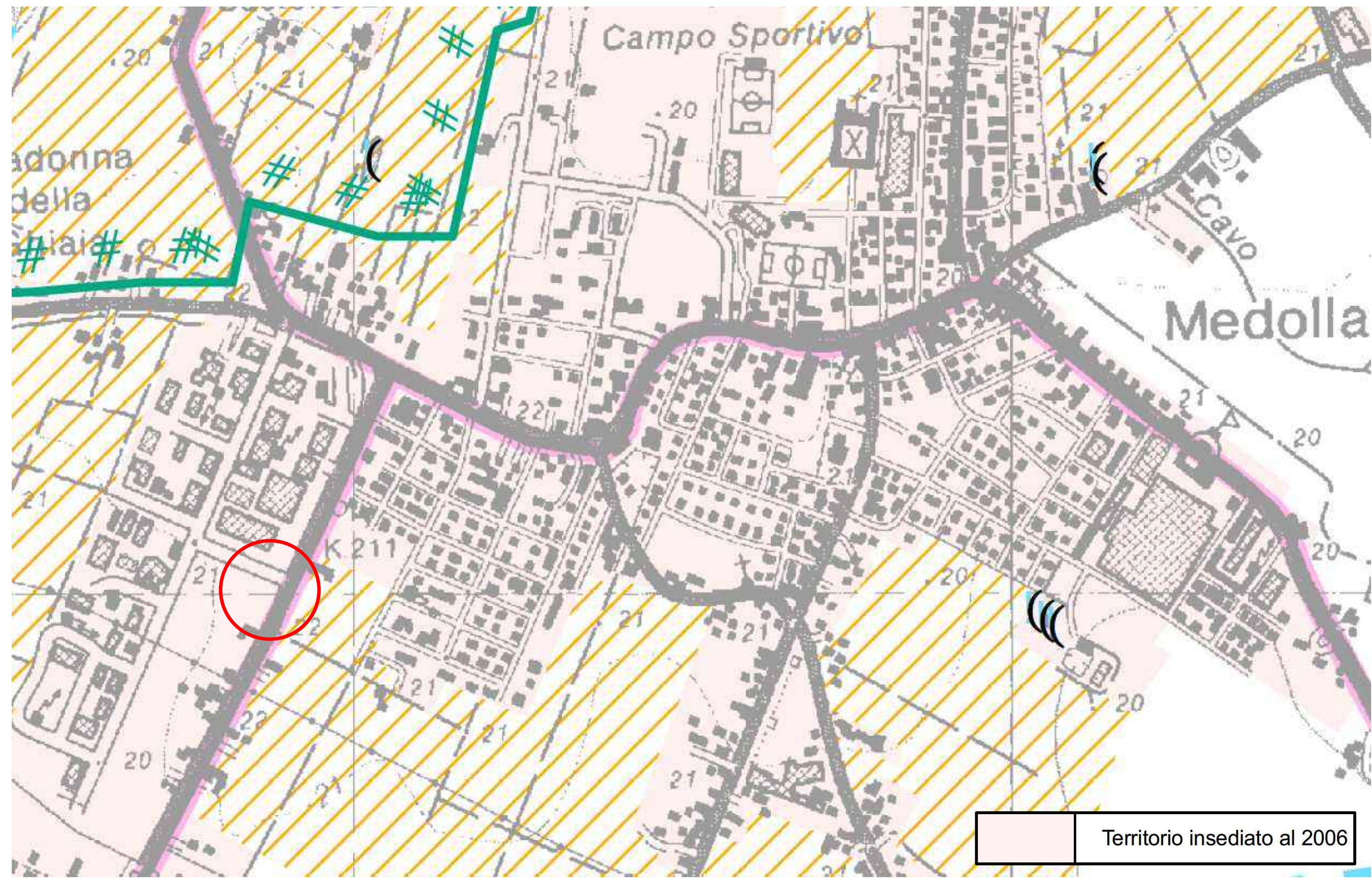
Emotec

Area pertinenziale Emotec

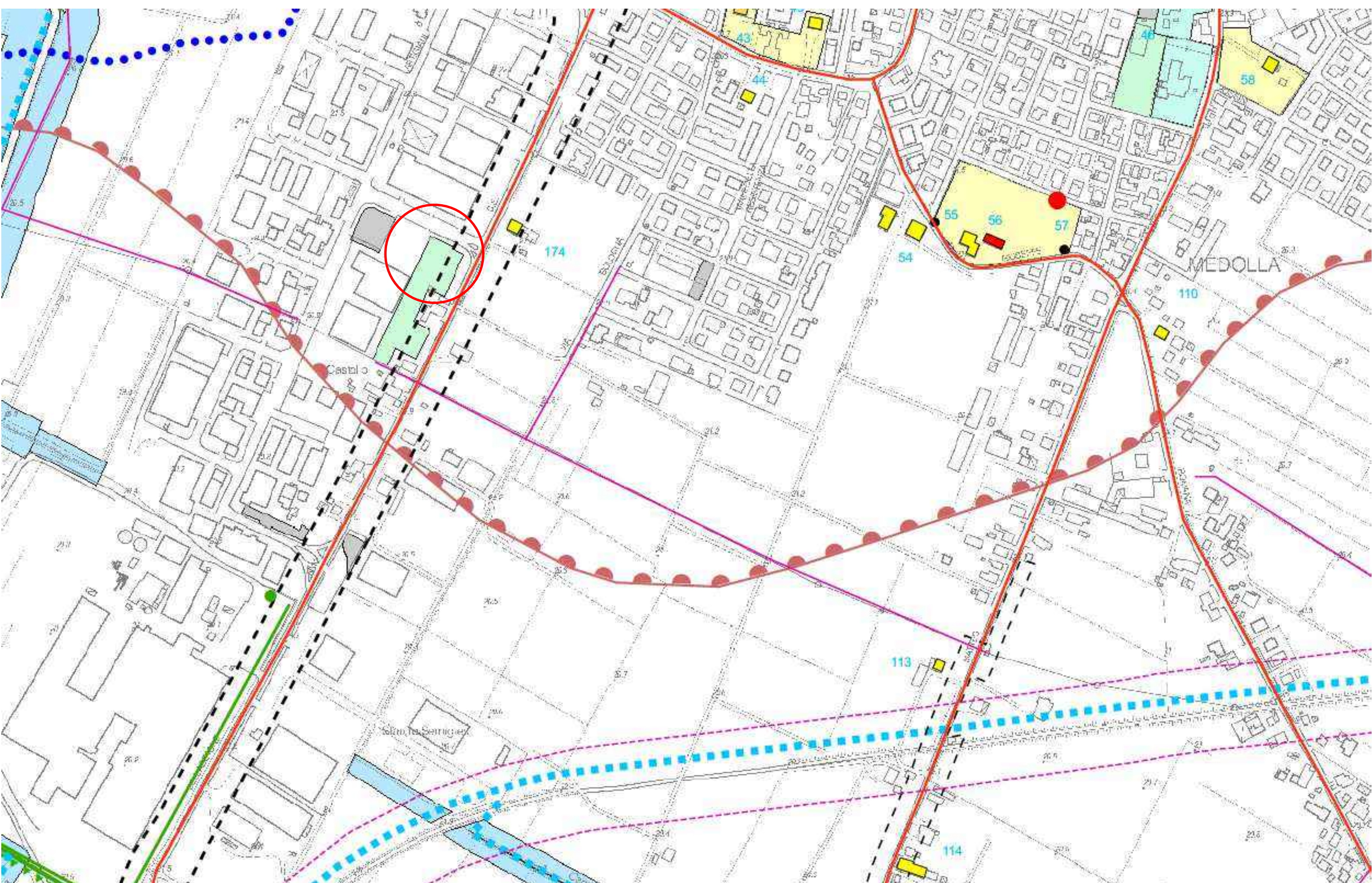
Via Statale



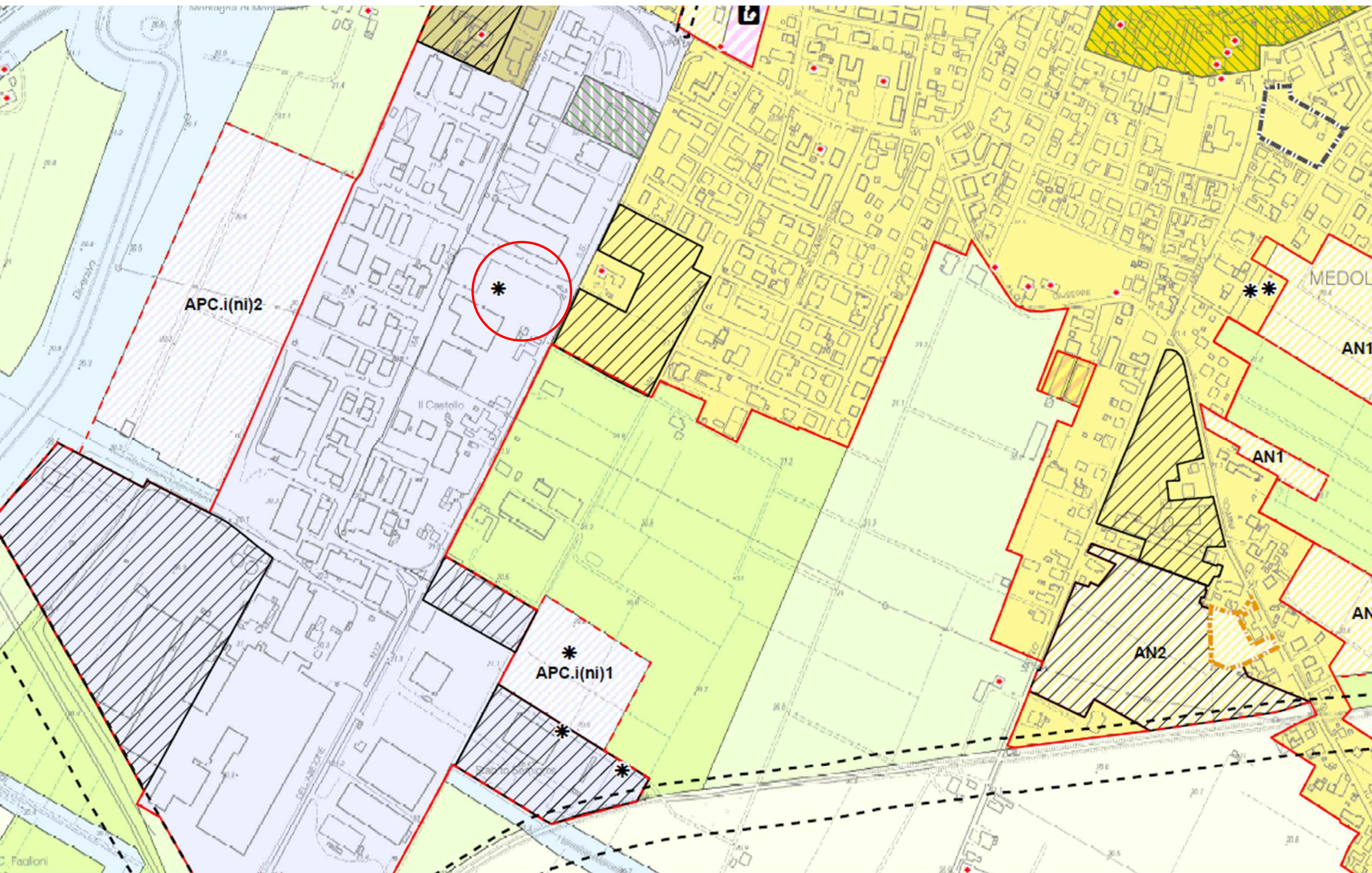




Territorio insediato al 2006



Verde pubblico





 Verde pubblico

VARIANTE 3.4 – Eliminazione vincolo urbanistico a “verde pubblico”

TAVOLA PSC 2.1 – CARTA DEI VINCOLI E DELLE TUTELE – VIGENTE



TAVOLA PSC 2.1 – CARTA DEI VINCOLI E DELLE TUTELE – VARIANTE



VARIANTE 3.5 – Apposizione di vincolo urbanistico “verde pubblico alberato”

TAVOLA PSC 2.2 – CARTA DEI VINCOLI E DELLE TUTELE – VIGENTE

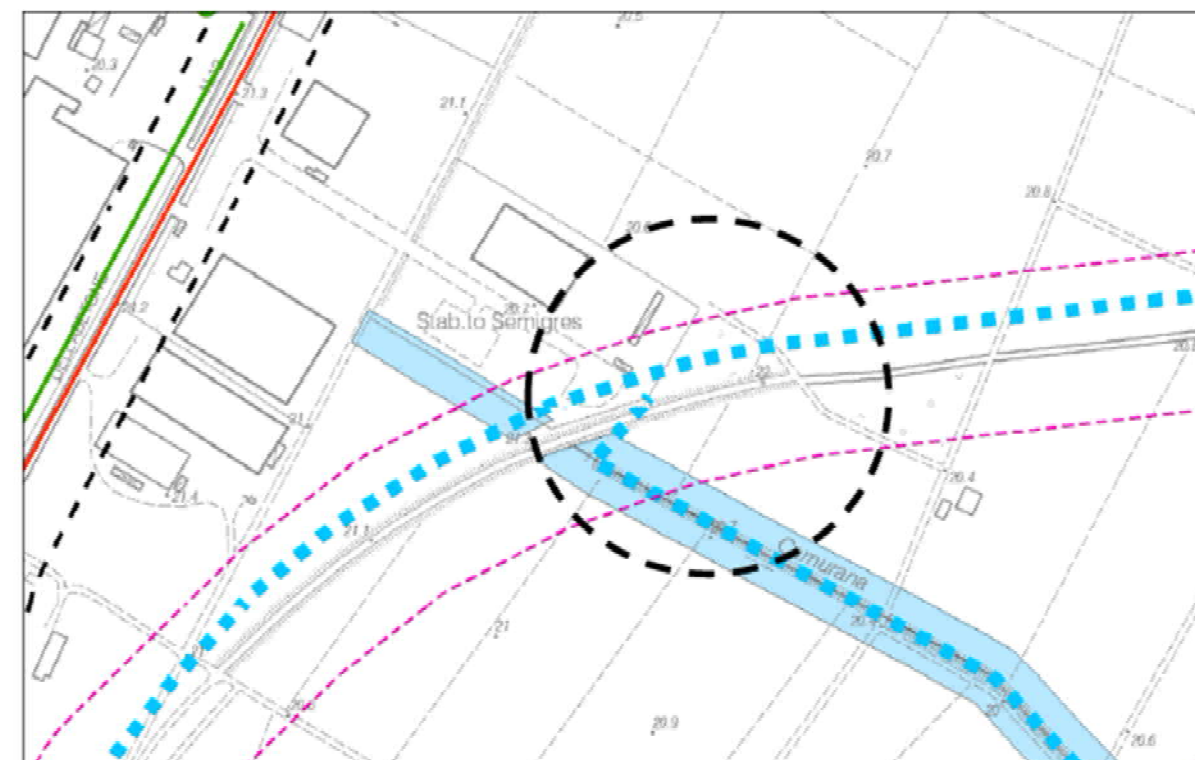
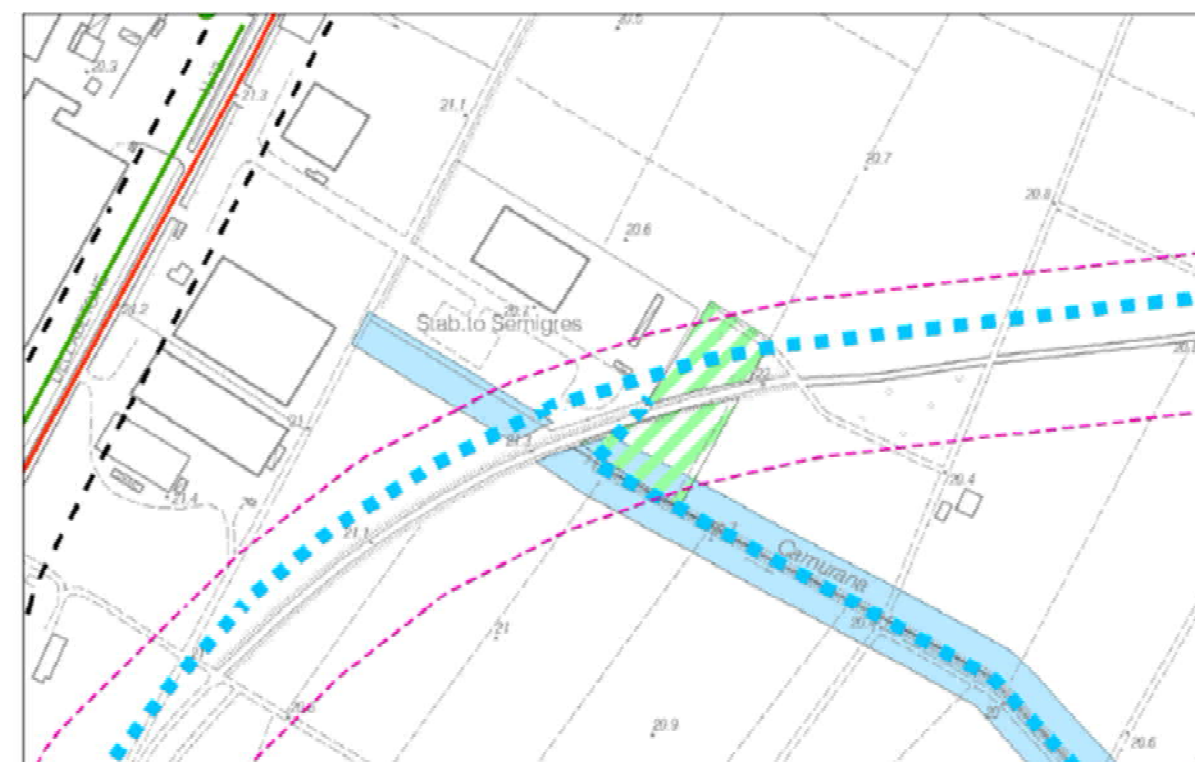
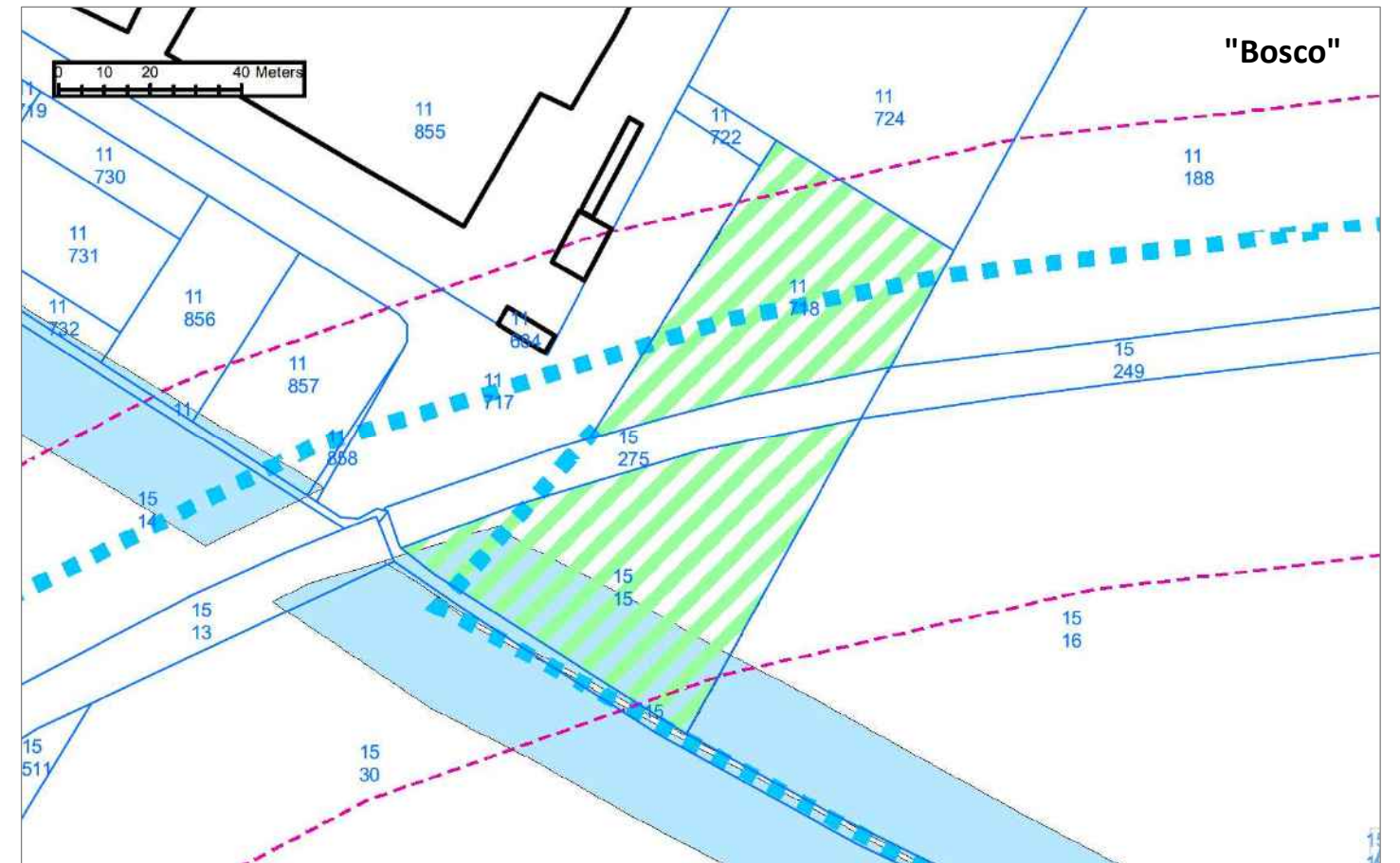
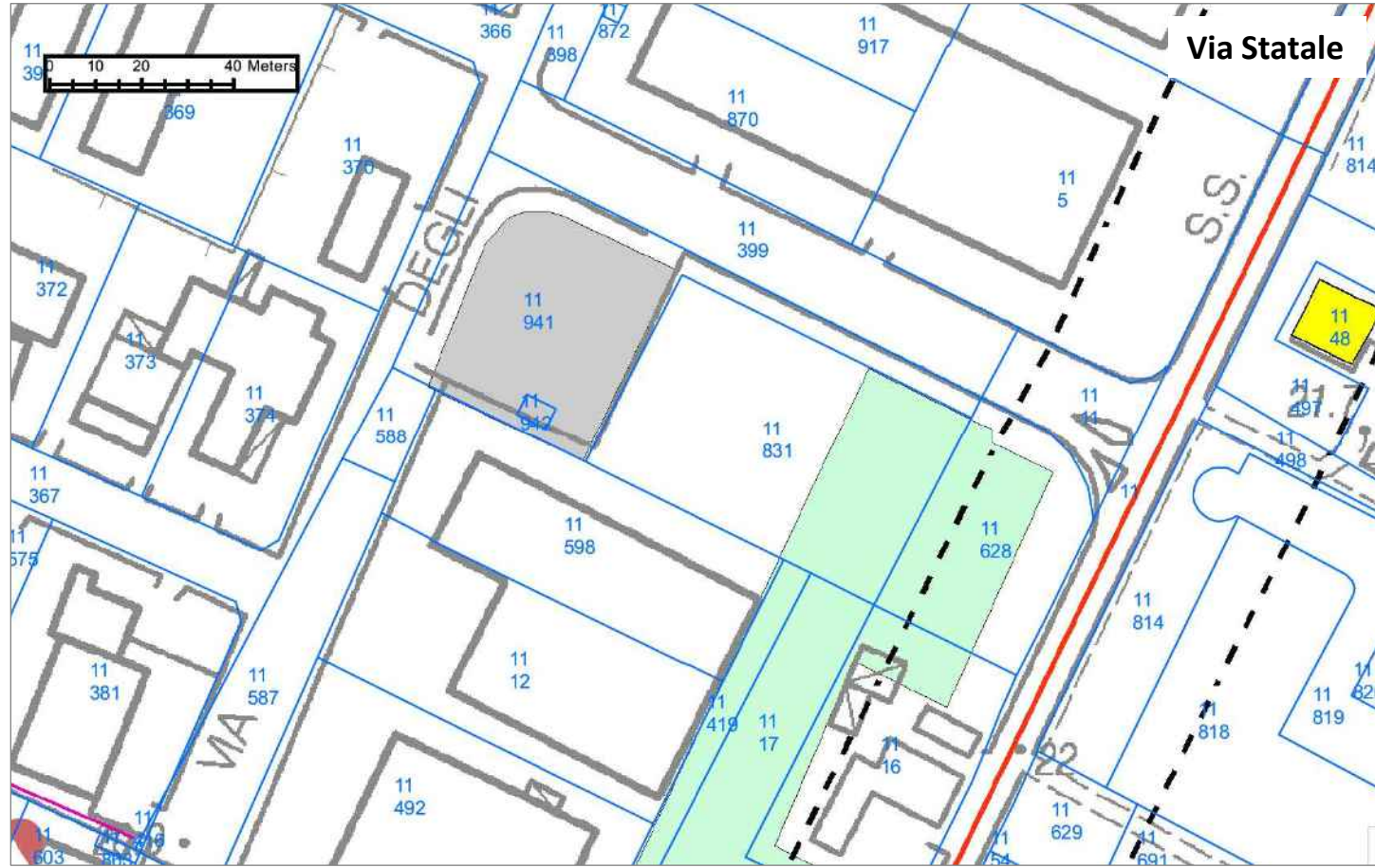


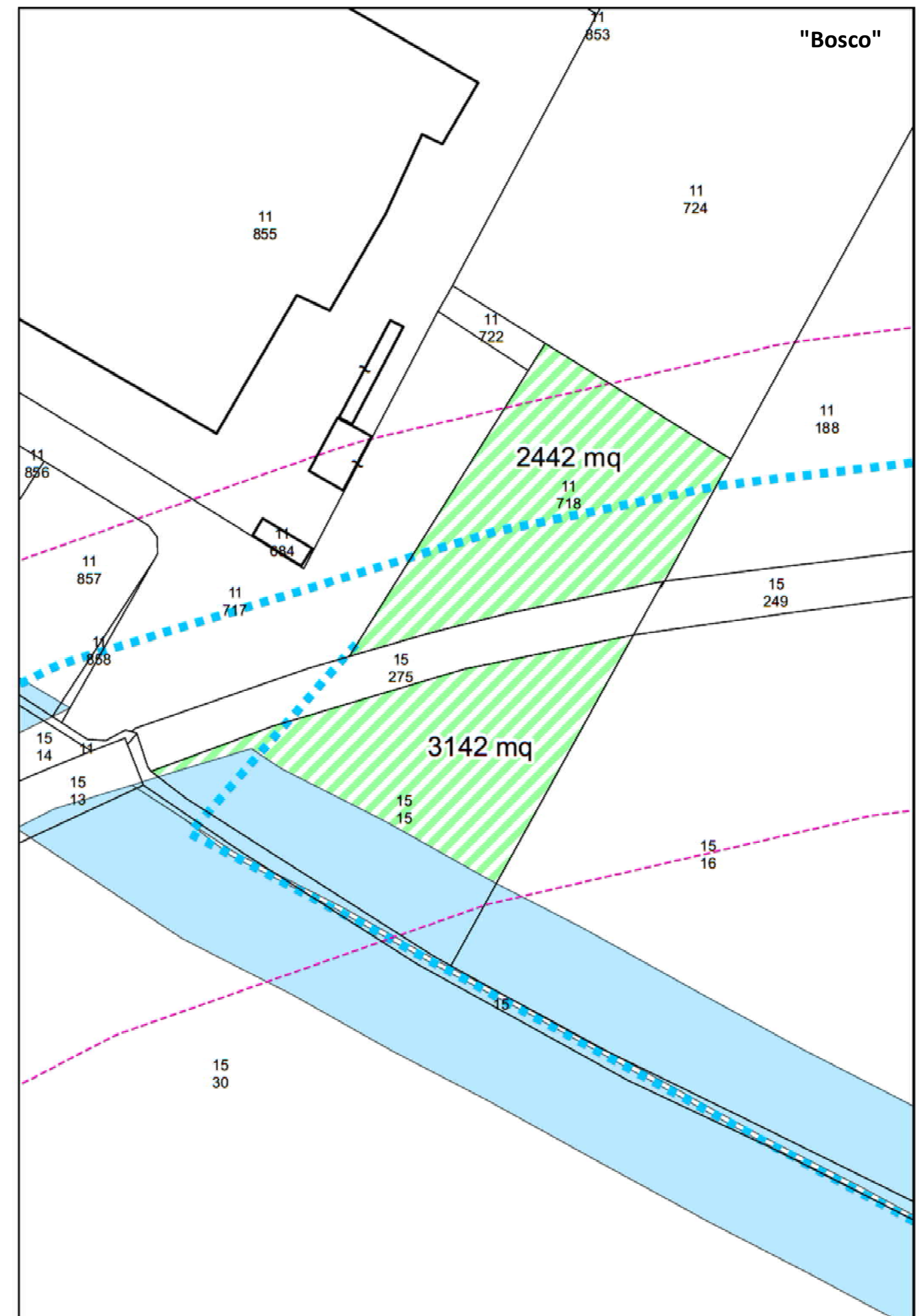
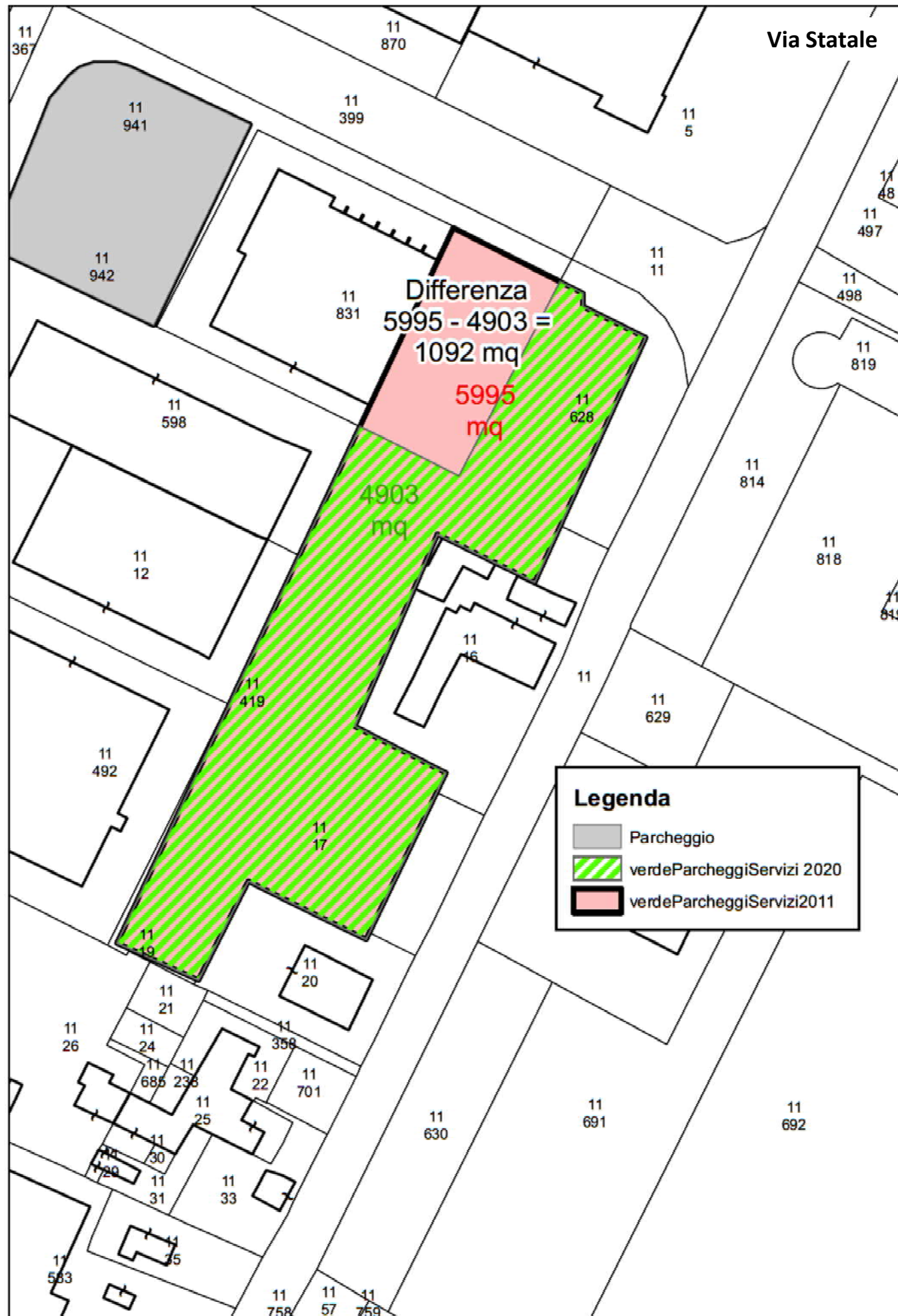
TAVOLA PSC 2.2 – CARTA DEI VINCOLI E DELLE TUTELE – VARIANTE



PSC 2011

PSC 2020









[15] Superficie permeabile: stato attuale lotto di ampliamento

